


www.masterblockindonesia.com

 (021) 7561126 / 29

 (021) 7561129

 info@masterblockindonesia.com

 MasterblockId

 @masterblock_id

 @masterblock_id



MASTERBLOCK[®]

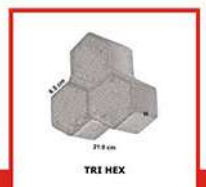
The Paving Specialist



PT Masterblock Indonesia
Jl. Raya Buaran Gardu No 168
BSD City, Serpong
Tangerang Selatan - Banten



Factory:
Jl. Atma Asnawi
(Dekat Pergudangan
Sigma Kartika)
Gn. Sindur, Bogor
Jawa Barat 16340



SPEKIFIKASI PRODUK

TRU PAVE



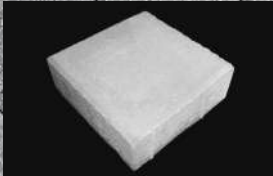
| Ukuran (cm) | Tinggi (cm) | Isi (pcs) / m ² |
|-------------|-------------|----------------------------|
| 21 x 10.5 | 6 | 45 |
| | 8 | |
| | 10 | |

GRASSBLOCK



| Ukuran (cm) | Tinggi (cm) | Isi (pcs) / m ² |
|-------------|-------------|----------------------------|
| 45 x 30 | 6 | 7 |
| | 8 | |

COBLESTONE



| Ukuran (cm) | Tinggi (cm) | Isi (pcs) / m ² |
|-------------|-------------|----------------------------|
| 21 x 21 | 6 | 22 |
| | 8 | |

HEXAGON



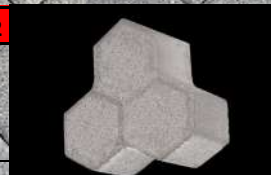
| Ukuran (cm) | Tinggi (cm) | Isi (pcs) / m ² |
|------------------|-------------|----------------------------|
| 11.5 x 11.5 x 20 | 6 | 29 |
| | 8 | |

KUBUS



| Ukuran (cm) | Tinggi (cm) | Isi (pcs) / m ² |
|-------------|-------------|----------------------------|
| 10.5 x 10.5 | 6 | 90 |
| | 8 | |

TRI HEX



| Ukuran (cm) | Tinggi (cm) | Isi (pcs) / m ² |
|-------------|-------------|----------------------------|
| 6.5 x 21.9 | 6 | 30 |
| | 8 | |

UNI PAVE



| Ukuran (cm) | Tinggi (cm) | Isi (pcs) / m ² |
|-------------|-------------|----------------------------|
| 22.5 x 11.5 | 6 | 39 |
| | 8 | |

KANSTEEN JEPIT



| Ukuran (cm) | Isi (pcs) / m ² |
|--------------|----------------------------|
| 10 x 20 x 40 | 2.5 |

TOPI USKUP



| Ukuran (cm) | Tinggi (cm) | Isi (pcs) / m ² |
|-------------|-------------|----------------------------|
| 30 x 6 x 21 | 6 | 24 |
| | 8 | 24 |

KANSTEEN COR



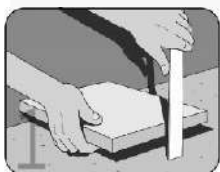
| Ukuran (cm) | Isi (pcs) / m ² |
|-----------------|----------------------------|
| 10/20 x 40 | 2.5 |
| 12/15 x 28 x 40 | 2.5 |
| 12/15 x 30 x 40 | 2.5 |
| 13/17 x 20 x 40 | 2.5 |
| 16/20 x 30 x 40 | 2.5 |
| 8/13 x 20 x 50 | 2 |
| 18/22 x 25 x 60 | 1.7 |

BATAKO



| Ukuran (cm) | Tinggi (cm) | Isi (pcs) / m ² |
|-------------|-------------|----------------------------|
| 39 x 19 | 9 | 13.5 |

Instalasi Paving Block



1
Tentukan level untuk kerataan & kemiringan



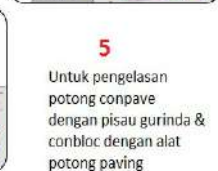
2
Siapkan pasir di tempat yang telah di leveling



3
Ratakan pasir sesuai dengan leveling



4
Pasang paving dengan cara maju ke depan & berdiri di atas paving



5
Untuk pengelasan potong conpave dengan pisau gurinda & conbloc dengan alat potong paving



6
Padatkan paving dengan menggunakan stamper plate, kemudian 'naat' diisi pasir halus, lalu di stamper ulang

